



iRig Stream Solo

3-in, mono out streaming audio interface

USER MANUAL

Table of Contents

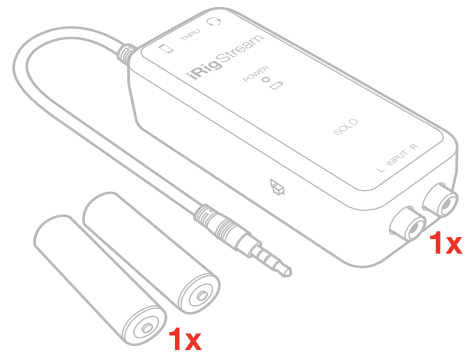
Contents	2
English	3
iRig Stream Solo	3
Register your iRig Stream Solo	3
Installation and setup	4
Connection examples	9
Connecting headset/phones	9
Connecting line level signal to the RCA inputs	10
Using the loopback function	11
Troubleshooting	11
Specifications	12
Warranty	13
Support and more info	13
Regulatory	14

iRig Stream Solo

Thank you for purchasing iRig Stream Solo.

Your package contains:

- iRig Stream Solo.
- 2xAA batteries.
- Registration Card.



iRig Stream Solo is an easy-to-use audio interface for iPhone, iPad and Android that lets you connect up to 3 distinct sources and mix them into your stream. Connect mixers or keyboards, your earbuds or iRig mics, and even audio played right on your device, and mix them together into a signal that's optimized for streaming and sent straight to your favorite apps.

It's all you need to start streaming in a compact and battery-powered format.

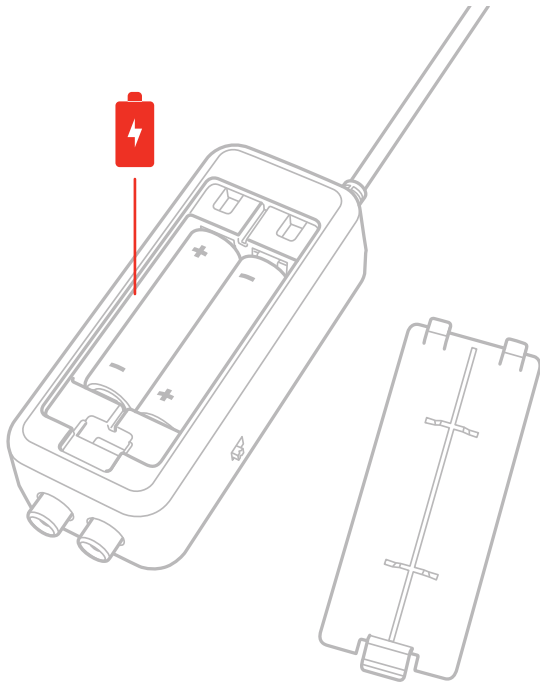
Register your iRig Stream Solo

By registering, you can access technical support, activate your warranty and receive free JamPoints™ which will be added to your account. JamPoints™ allow you to obtain discounts on future IK purchases! Registering also keeps you informed of all the latest software updates and IK products.

Register at: www.ikmultimedia.com/registration

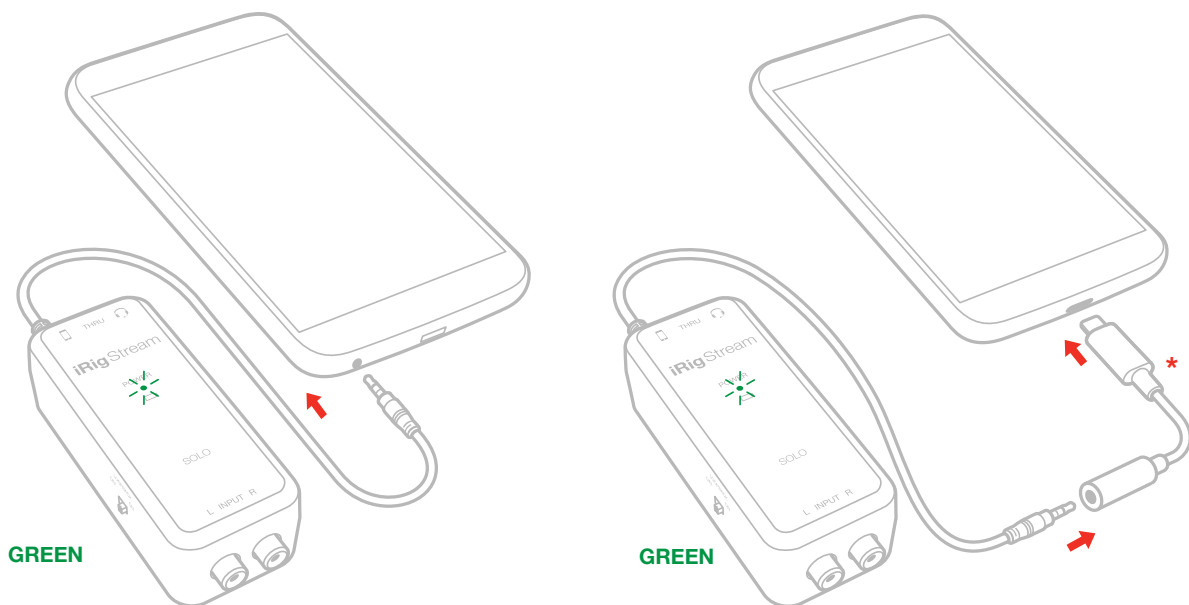
Installation and setup

1. Insert the supplied AA batteries into the battery compartment of iRig Stream Solo.



2. Connect the iRig Stream Solo to the host device headphone socket. You will require a suitable adaptor (not supplied) if your phone or tablet does not provide a headphone socket. If there is sufficient battery power (ie. with new batteries) the LED in the iRig Stream Solo will display green.

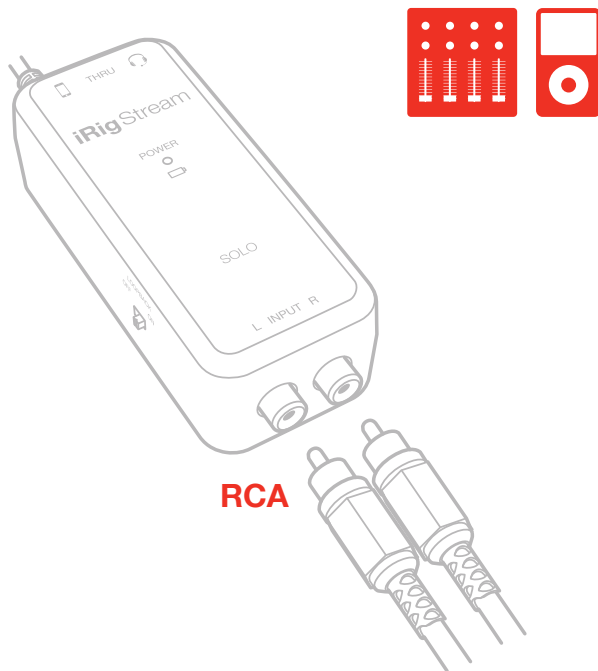
*Not included



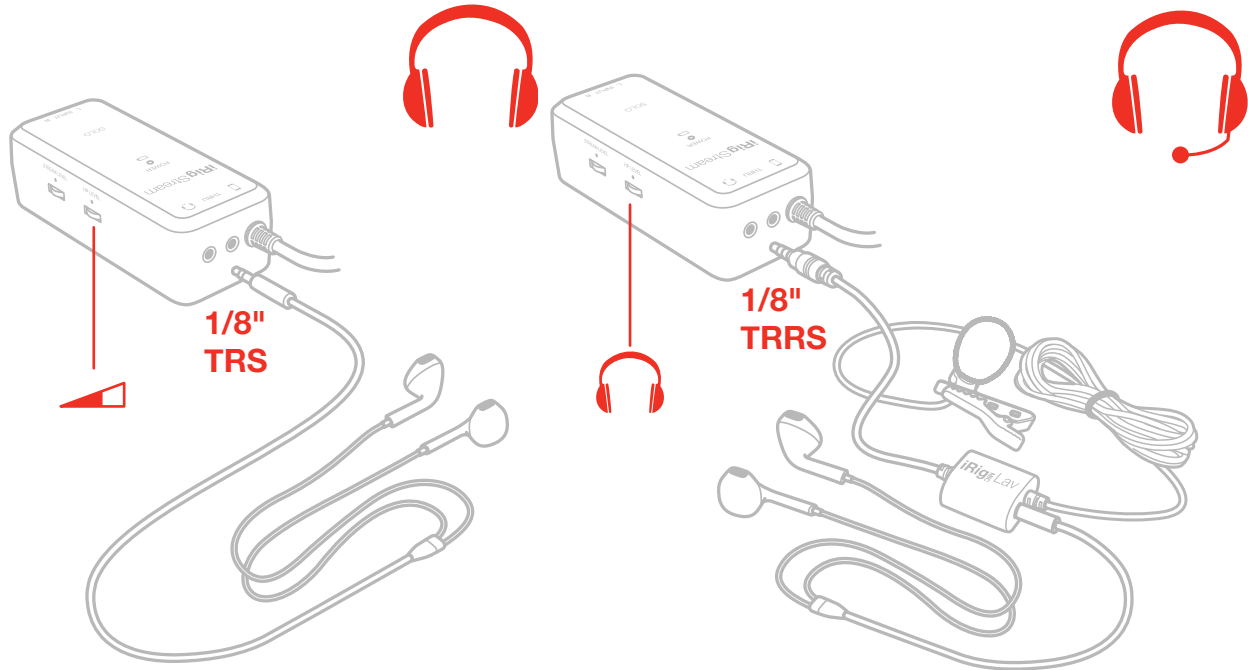
3. Download and launch the app.



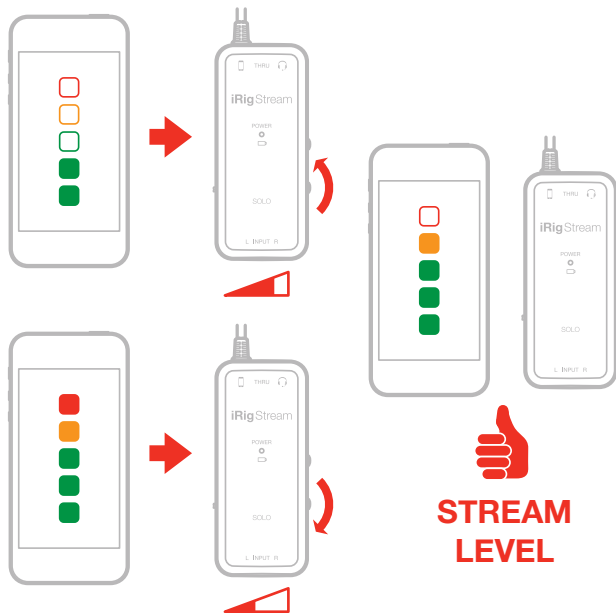
4. Connect any line level signal (such as from an audio mixer) to the two front RCA input sockets. To adjust the volume of the device connected to these connectors, use the volume controls of that device and the Stream Level thumbwheel on side of iRig Stream Solo.



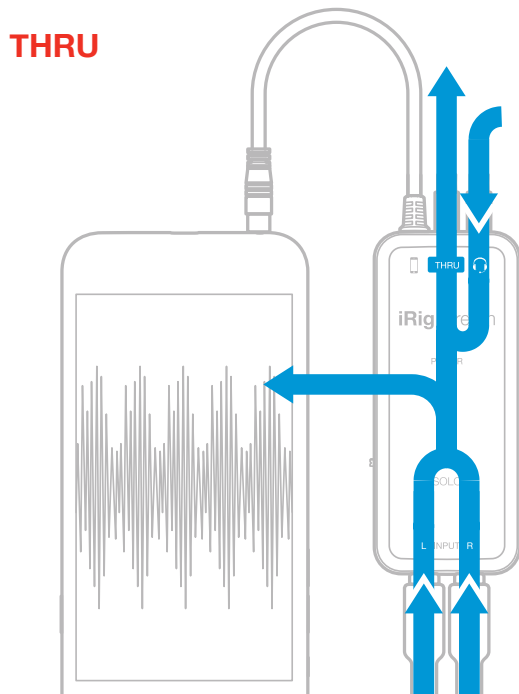
5. Connect a TRRS headset (compatible with CTIA standard) or an iRig analog microphone to the 1/8" Headset/Phone jack. You can adjust the microphone level with the Stream Level thumbwheel and the headphone level with the HP Level thumbwheel. Alternatively, you can directly connect a pair of headphone to the Headset/Phone jack and set its level with the HP Level thumbwheel.



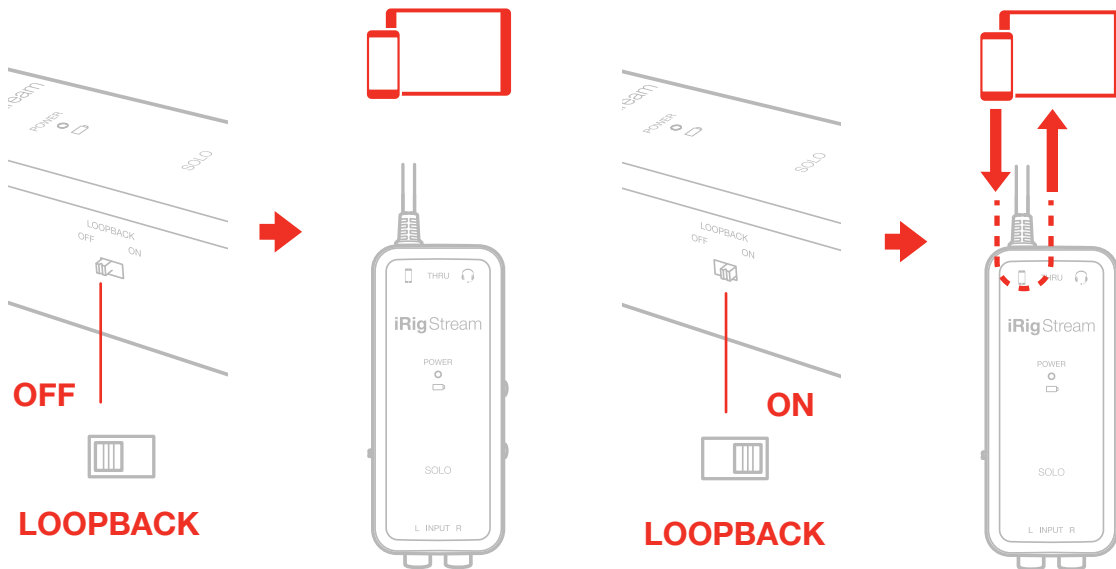
- The main Level knob lets you control the overall audio input streaming level coming from the RCA line input and from the (eventually) connected microphone/headset. Check the input level meter on the app you are using to record (like iRig Recorder). This level meter should peak as high as possible but should never reach the maximum or clipping level.



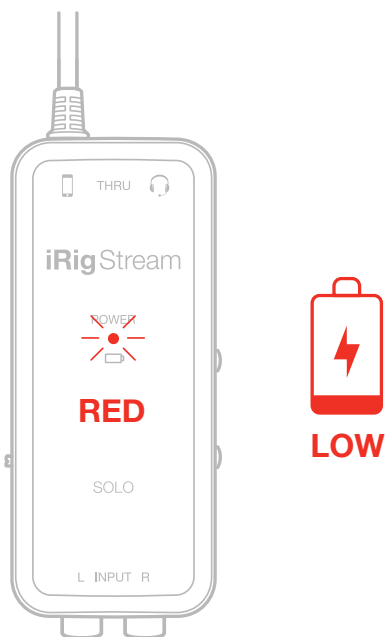
- Connect an external mixer, PA or any other device with a line input to the THRU output port. This is a mono line level output that carries the mix of the RCA and headset input. Please note that the level of this output won't be controlled by the Stream Level thumbwheel.



9. With the Loopback function turned on, the audio that is input to the iRig Stream Solo from your host via TRRS is returned back to the host. Also in this case, the main Level knob will control the overall level that is recorded.



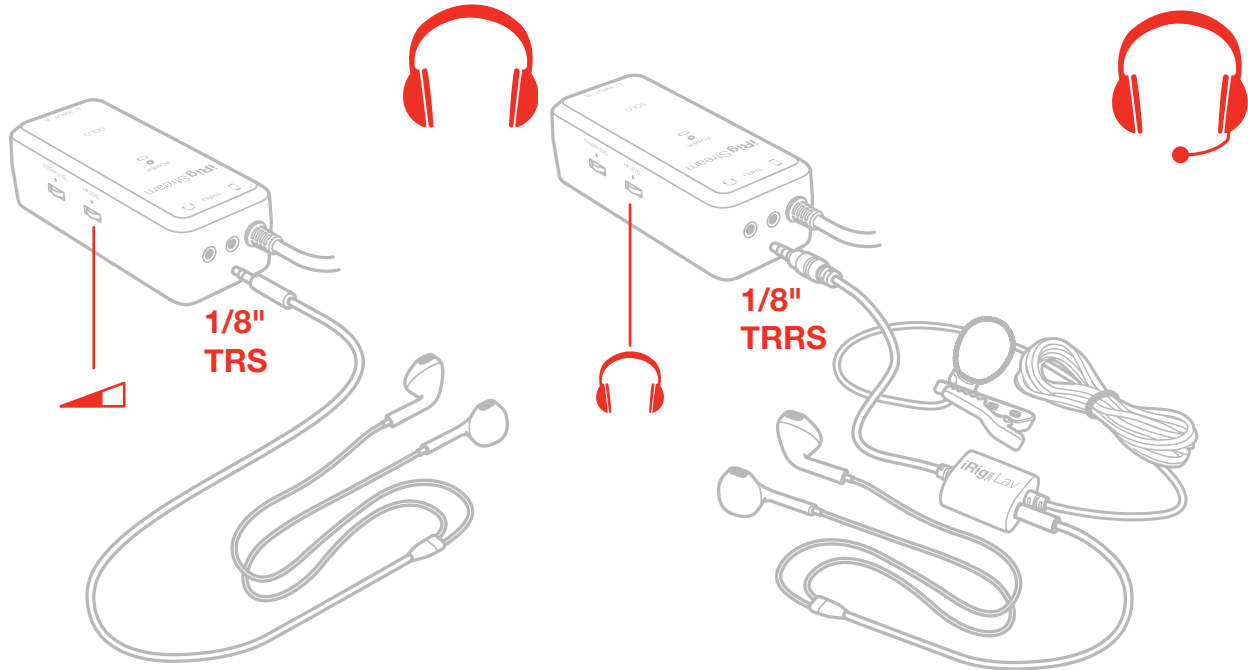
10. When the battery level is low the LED will turn on RED. Replace the batteries as soon as possible.



Connection examples

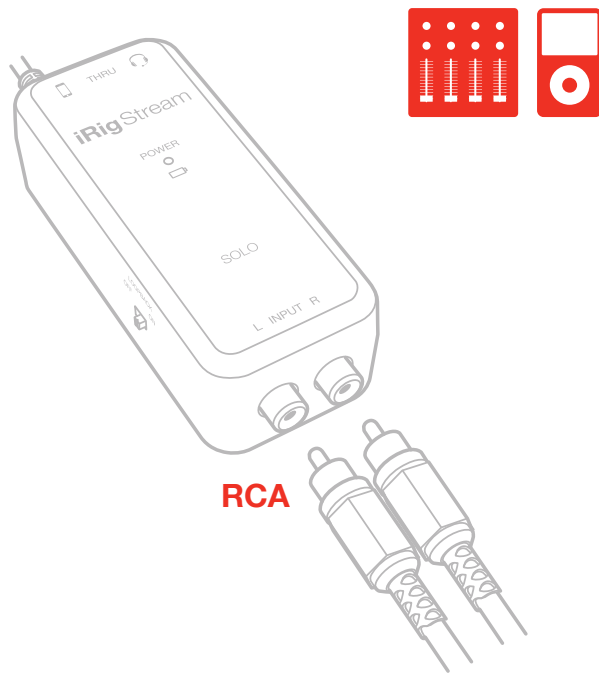
Here are some examples of connecting mic or line level signals to iRig Stream Solo.

Connecting headset/phones



Connect a TRRS headset (compatible with CTIA standard) or an iRig analog microphone to the 1/8" Headset/Phone jack. You can adjust the microphone level with the Stream Level thumbwheel and the headphone level with the HP Level thumbwheel. Alternatively, you can directly connect a pair of headphone to the Headset/Phone jack and set its level with the HP Level thumbwheel.

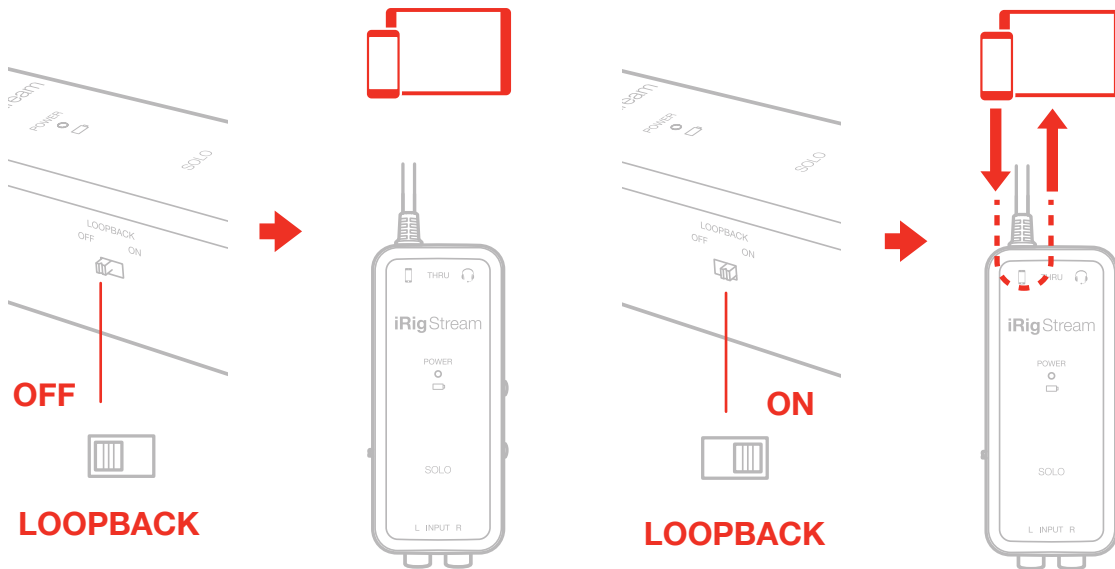
Connecting line level signal to the RCA inputs



It is possible to connect any line level source to the RCA inputs. This signal can come from an mp3 player, a computer or an audio mixer. The main Stream Level thumbwheel adjusts the overall volume that is recorded. To adjust the volume of the device connected to the RCA inputs, use the volume controls of the device.

IMPORTANT: please note that these are line level inputs and not PHONO inputs so, PHONO signal, needs to be converted to a LINE LEVEL signal before to be connected.

Using the loopback function



With the LOOPBACK function turned on, the audio that is input to the iRig Stream Solo from your host via TRRS is returned back to the host. The main Stream Level thumbwheel will control the overall level that is recorded.

Troubleshooting

Sound is distorted.

Check that the input level on iRig Stream Solo has been set properly: if your recording sounds distorted you may need to decrease the Stream Level with the dedicated thumbwheel

A “phasing” sound is present while monitoring the incoming signal.

In order to monitor the incoming audio with apps and software that do not allow for audio input monitoring, a direct monitoring function is always enabled on iRig Stream Solo. If a “phasing” effect is present, you can disable the input monitoring from your recording app. For more details about its monitoring function, refer to the documentation for your audio software.

Specifications

Common

Power: 2x AA batteries

Metering: Battery status LED

Device Connection: captive 1/8" / 3.5mm TRRS jack - CTIA/AHJ wiring standard

Dimensions: 45 x 105 x 34 mm

Weight (without batteries): 74g

Line input

Connector: 2x RCA (unbal.) Left/Right

Nominal Input Level: -10 dBV

Head Room: 9 dB

Input Impedance: 15 kOhms

Frequency Response: from 20 Hz to 20 kHz (-3 dB)

Headset/Phone

Connector: 1/8" TRRS jack (CTIA wiring standard)

Supply voltage: $\geq 2,5$ V

Microphone gain: Fixed at 27dB

Headphone frequency response: from 20 Hz to 20 kHz (-3 dB)

Microphone frequency response: from 50 Hz to 20 kHz (-3 dB)

Headphone Level control: numbered thumbwheel

Thru out

Connector: 1/8" TRS jack

Frequency Response: from 20 Hz to 20 kHz (-3 dB)

Battery Life

+50 hours (Alkaline batteries)

Warranty

Please visit:

www.ikmultimedia.com/warranty

for the complete warranty policy.

Support and more info

www.ikmultimedia.com/support

www.irigstreamsolo.com

IK Multimedia

IK Multimedia Production Srl

Via dell'Industria 46, 41122 Modena, Italy

Phone: +39-059-285496 - Fax: +39-059-2861671

IK Multimedia US LLC

590 Sawgrass Corporate Pkwy, Sunrise, FL 33325

Phone: (954) 846-9101 - Fax: (954) 846-9077

IK Multimedia Asia

TB Tamachi Bldg. 1F, MBE #709,

4-11-1 Shiba, Minato-ku, Tokyo 108-0014

www.ikmultimedia.com/contact-us

"Made for iPod," "Made for iPhone," and "Made for iPad" mean that an electronic accessory has been designed to connect specifically to iPod, iPhone, or iPad, respectively, and has been certified by the developer to meet Apple performance standards. Apple is not responsible for the operation of this device or its compliance with safety and regulatory standards. Please note that the use of this accessory with iPod, iPhone, or iPad may affect wireless performance.

iRig® Stream Solo is trademark property of IK Multimedia Production Srl. All other product names and images, trademarks and artists names are the property of their respective owners, which are in no way associated or affiliated with IK Multimedia. iPad, iPhone, iPod touch Mac and Mac logo are trademarks of Apple Computer, Inc., registered in the U.S. and other countries. Lightning is a trademark of Apple Inc. App Store is a service mark of Apple Inc.